

ENTOMOLOGICAL SOCIETY OF AMERICA
91ST ANNUAL PACIFIC BRANCH MEETING
Portland Marriott Downtown Waterfront, Portland, Oregon
March 25-28, 2007

EXECUTIVE COMMITTEE MEETING MINUTES
March 25th, 2007, 5:00 - 7:00 PM, *Room - Columbia*

President: Helmut Riedl

Secretary-Treasurer: Brian Bret

Executive Committee Members:

Lucia Varela (2004-2007)

John Palumbo (2004-2007)

Sue Blodgett (2005-2008)

Arnold Hara (2005-2008)

Nilsa Bosque-Perez (2006-2009)

Doug Walsh (2006-2009)

Past President: John Stark

President-elect: Larry Godfrey

Governing Board Representative: Steve Clement

5:00 **CALL TO ORDER:** Helmut Riedl

Recognition and gratitude extended to all the committee chairs and volunteers. Organization of meeting complicated by having to reach out to entomologists in 7 different departments at Oregon State University due to the dissolution of the Entomology Department a few years ago. OSU entomologists came together admirably for a common cause.

5:01 **Attendees**

Helmut Riedl, Brian Bret, Larry Godfrey, Lucia Varela, Jim Barbour, John Stark, Doug Walsh, Darrell Ross, Vickie Yokoyama, John Palumbo, Sujaya Rao, Jeff Miller, Alberto Pantoja, Nilsa Bosque-Perez, Hanna Burrack, Marshall Johnson, Carolyn Pickel, Patrick Weddle, Robin Rosetta, Mike Ivie, Mike Lees.

5:06 **C. W. Woodworth Sponsor Report:** Helmut Riedl for Brian Holden

Brian Holden and his wife JoAnne Wilfert are financial sponsors of the C.W. Woodworth Award. Brian is the great-grandson of C.W. Woodworth. There are 8 Woodworth relatives in town, some from Portland and others flew in from NY and MO, including Brian and Joanne from CA. CW's niece, Mary Young Dietrich, will give an overview and reflections of her memories of her uncle at Monday's general session. Brian Holden has committed to continue support for another 10 years.

5:12 **Two-Minute Committee Reports** (Chairs may leave after their report):

Program: Sujaya Rao

- t Total of 168 papers and 65 posters. Nine symposia with 80 presentations including the student symposium; 59 submitted papers; 43 posters; 25 student competition papers; 22 student competition posters, for a total of 233 oral and poster presentations. The high number of papers resulted in addition of a 4th concurrent session on Wednesday morning.
- t Symposia represent a rich blend of applied and basic. Five symposia were comprised of mostly non-ESA members. This boosted numbers but created issues with registration.

Policy was all participants pay registration fee. Waivers as well as travel assistance were available upon request.

- t Tried to coordinate a Science Teacher Workshop, but meeting dates fell during Spring break for Portland school districts.
- t Recommend changes to registration forms and abstract forms.
 1. Tabulate – facilitate checking the right category
 2. Multiple recipients of form
 3. Request email address on forms.
 4. Full name on submission form and abstract (Need a consistent naming convention on both - last name first?)
 5. Submission form and Abstract - together vs. separate forms
 6. Remove Track changes from forms.
 7. Use available software for putting together the program
 8. Consider one-day registration
 9. ESA Sections will change if Society reorganization approved.

Registration: Robin Rosetta

Over 318 registrations so far, including walk-in registrations Sunday evening. Found out that many of the speakers were not registered and not sure how to handle that. Maybe those that are just coming in for their talk, and not staying for reception or luncheon, esp. symposia speakers. Some symposia organizers have requested waivers and/or travel assistance for their speakers. Program Enhancement Funds are available from ESA central office for this purpose.

Local Arrangements: Darrell Ross

Increased number of registrations meant change in reception location to the ballroom downstairs. Also, keeps having to increase number of lunches to order. Also had to add a 4th meeting room to accommodate 4th concurrent session added Wednesday morning. Marriott staff has been very helpful and cooperative.

Operations: John Luna

All presentations should be loaded on computers in the “ready room”. Timers and pointers will be available at each session.

Awards Canvassing: Carolyn Pickel

Received nominations for 9 awards from 10 universities or institutions, most had at least 2 nominations. Comstock Award had 6 nominations. CW Woodworth Award recipient is Nick Toscano from UC Riverside. John Henry Comstock Award recipient is Rajagopalbabu ‘Babu’ Srinivasan. Other winners will be announced and presented plaques at the Awards Luncheon on Tuesday.

Nominations: Keith Pike (Chair), Eric Natwick, Ross Miller

The following nominations have been put forth by the Nominations committee for election to the ESA Pacific Branch during the final business meeting Wednesday morning:

- t Walter Bentley, President-elect (2008/09)
- t Mike Lees, Secretary/Treasurer (2007-10)
- t Mike Ivie, Executive Committee (2007/2008 - replacement for Sue Blodgett who has left the Pacific Branch for Department Head position at Univ. of South Dakota)
- t Brian Bret and Alberto Pantoja, Executive Committee (2007-2010 - replacements for Lucia Varela and John Palumbo whose terms expire)

In addition, Pacific Branch should present candidates for national office of President, Treasurer, and Governing Board representative.

t John Stark, WSU, was nominated as Pacific Branch candidate for President-Elect of ESA by Mike Ivie. Second by Doug Walsh. Approved by voice vote.

t Mike Parrella, UC Davis, was nominated as Pacific Branch candidate to the Governing Board by John Stark. Second by Joe McCaffrey. Approved by voice vote.

Membership will vote to approve these nominations at final business meeting Wednesday morning.

Membership: [Frank Zalom](#) (submitted via email)

As reported last year, the National ESA membership turned the corner, increased and is now stable. This was a major success for the national office and recent Past Presidents ESA membership nationally compares favorably to the same month/end-of-year levels as in the prior year.

t Pacific Branch current plus non-renewed members as of March 22, 2007 was 1473 members. Of these, 182 members have not yet renewed for 2007, so 1291 were current paid members. This is compared to 1233 paid members at the close of 2005.

t Of the 1473 members, 942 were Active Members, 309 were Student Members, 51 were either Student Transition plan 1 or plan 2 members, 78 were Emeritus members, 46 were Emeritus-Gold members, and the rest were Honorary, Family, Sustaining or Youth Members.

Chris Stelzig provided the Membership Committee with regular membership updates during 2006. Among Membership Committee functions are to contact members who have not yet renewed to encourage them to do so during a concerted effort after the first of the year.

The Membership Committee met at the National Meeting in Indianapolis. Nic Ellis, The Pennsylvania State University, became Chair for 2007, following Floyd Shockley, University of Georgia, who served the Society well in 2006.

This year ends my 3 year appointment as Pacific Branch Membership Chair, which also includes membership on the ESA Standing Committee on Membership. It was my privilege to again serve the Branch, and I will be happy to help mentor the next Chair who will be appointed by President Godfrey.

Graduate Student Symposium: Melissa Scherr (Chair) & Jennifer Henke

Will be held Wed a.m. Theme is "A Half Century of Entomology in Western North America". Students will give a salute to programs and/or highlight contributions of key figures from four different universities in the Pacific Branch.

Linnaean Games: Mike Ivie

Four teams competing from OSU, UC-Riverside, UC-Davis, and WSU. Will be held Monday evening after the reception.

Student Paper/Poster Competitions: Carol Anelli

t MS poster competition – 10 entries

t PhD poster competition – 12 entries

- t MS oral presentation competition – 8 entries
- t PhD oral presentation competition – 16 entries. Had to split it up into 2 sessions. Will award a 1st and 2nd place winner for each session.

Recommend in the future that students send papers and abstracts to the Chair of the Student Competition instead of to the Registration Chair.

ESA Student Affairs: Hannah Burrack (2005-2007), Melissa Scherr (2006-2008)

Focus this year on mentor/mentorship relationships. Broad topics from applied, systematics, medical entomology.

Will add info on volunteer opportunities to the employment binder. Suggestion made to have graduate students serve as session moderators. Gets them involved in their society and an opportunity to serve.

Photo Salon: Jeff Miller

Seven persons submitted images, plus Jeff added additional. A photo slide show will be shown in the background at the reception Monday evening. Additional brief slide show will be held during Awards Luncheon. The Photo “Saloon” will be held Tuesday evening with a cash bar prior. No students submitted images, so no student award. First place award for \$50 will be awarded during luncheon.

Employment Opportunities: [Patrick Weddle](#)

Job searches are now pretty sophisticated with internet searches and list serves. Uncertain if there is a need for an employment committee. Current folder will have copies of announcements from ESA Headquarters. Will be placed in the speaker ready room. Suggestion made to expand the mission of employment committee from just recent graduates to the 30-50 yr crowd of “down-sized” entomologists. Suggestion also made to include instructions on how to give an interview, help prepare students.

Auditing: Helmut Riedl for [Tad Gantenbein](#)

Audited and approved the branch’s finances.

Resolutions: James [Barbour](#)

Resolutions will be posted at the registration desk for review prior to the final business meeting on Wednesday morning. Any suggestions or comments, please contact Jim, or bring them to the final business meeting.

Plaques: Doug Walsh for [Kurt Volker](#)

Doug Walsh picked up the plaques from Kurt and brought them to the meeting. Doug volunteered to take care of plaques in the future.

Pacific Branch Meeting Website: Helmut for Sally Duckwall

Announcement and forms all on the website along with minutes of last year’s Executive Board meeting. Many thanks to Sally for her work as web mistress.

Site Selection: Marshall Johnson (Chair)

Narrowed selection to 2 sites in San Diego and 2 in Anaheim. 1 location in SD was very expensive, the other never provided a room rate and was very poor in responding back to the committee. Sheraton Anaheim has good room rates (\$155 single/double), but may not be a desirable location. Disney Paradise Pier is a better location, across the street from Downtown Disney, but has higher room rates (\$169 single/double). Committee voted to further pursue the 2 options in Anaheim. San Diego has more to see and do than Anaheim, but concern that National

meeting held in San Diego in 2007 and International Congress in 2012. ESA Central Office is using ConferenceDirect to find locations and negotiate rates and contract. Board directed incoming president to work with "ConferenceDirect" to help find sites and negotiate rates for 2009 meeting.

5:05 Approval of 2006 Pacific Branch Executive Committee Meeting Minutes

Past President Victoria Yokoyama was left off the list of participants. Correction in final minutes will be made. Vote to approve minutes as corrected.

6:00 ESA President's Report: John Stark for ESA President Scott Hutchins

All ESA members should be receiving in the mail information concerning the proposed reorganization of the ESA. Branches will remain unchanged. Sections will be reduced from 6 (A-F) to only 4, to better reflect the dynamics of the Society. Central office will focus on communication, finances, and leadership. All members are encouraged to vote for the change in organization.

Former Executive Director Paula Lettice left ESA to pursue an opportunity with another organization. Ann Kenworthy is serving as interim Executive Director. Director of Membership Chris Stelzig is attending the Pacific Branch meeting and will give an update at General Session Monday morning. Significant changes to personnel at central office in 2006. Membership has increased by >100 since last year. 2,033 attended the National Meeting in Indianapolis last fall (Dec. 2006). 2007 meeting at Town and Country in San Diego looks to be just as successful. Bob Peterson from Montana State Univ. is Program Chair. 76 symposia already have been proposed. ESA Publications group revisiting their strategic plan, is working to get back issues on-line prior to 1999.

6:10 Pacific Branch Governing Board Report: Larry Godfrey for Steve Clements, Governing Board Representative

Kudos to Pacific Branch members:

Three Pacific Branch (PB) members are recognized for being named Fellows of the Entomological Society of America at the ESA national conference in Indianapolis, December 2006: ***Dr. Marshall Johnson, Dr. Tim Paine, and Dr. Victoria Yokoyama.***

Additionally, several Pacific Branch members are currently active in national ESA affairs by serving on standing committees and holding various positions. Our society functions because of the many volunteers that come from the Branches. The following Pacific Branch members: Hannah Burrack, Melissa Scherr (Student Affairs); Doug Walsh (Awards); John Heraty (Governing Board liaison to Common Names of Insects); Sujaya Rao (Education and Youth); Justin Schmidt (Ethics); Michael Rust (Fellows); Richard Zack (Finance); Lynn Riddiford (Founder's Memorial Award); Mike Ivie (Honorary Membership); Bob Hollingsworth, Livy Williams, Martin Hauser, Peter Price, Charles Burk (International Affairs); Frank Zalom (Membership); Bob Peterson, Will Lanier, Michael Caterino (Program); Duncan Carter (Rules); Tom Shanower, Hannah Burrack (Strategic Planning).

Restructuring the Entomological Society of America

The ESA membership will be asked to vote on the restructuring proposal in spring 2007 (perhaps in May). Pacific Branch members and the leadership of the Branch are asked to study the elements of the proposal and vote! Members can go to the ESA website for complete information about this proposal, as well as the President's Corner in the ESA Newsletter (February 2007 and earlier issues) and the 2006 minutes of the ESA-PB Executive Committee meeting, Maui, Hawaii.

New and Continuing Developments and Actions from the Governing Board

- t The ESA is financially solvent.
- t The Governing Board rolled membership dues back to 2004 level.
- t Slight decrease in membership numbers.
- t Staff departures and additions at ESA headquarters. Ann Kenworthy, interim Executive Director, and Richard Levine, ESA Relations Officer, are new additions.
- t Governing Board is modifying the ESA Constitution and By-Laws.
- t Governing Board has contracted with Tri-Societies (Agronomy, Crop Science and Soil Science Societies) to help manage 2007 annual meeting. This was a successful arrangement in 2006 in Indianapolis.
- t Members will see more new ventures and improvements at the 2007 annual meeting in San Diego (technology improvements, availability of child care). For San Diego, early bird registration for regular members is \$300.00 and \$95.00 for student members.
- t Staff is improving the ESA website.
- t Annual meetings for 2008 and 2011 will be held in Reno, Nevada.
- t The Governing Board and headquarters staff will seek bids to digitize all back issues of ESA journals.
- t A bid to host the 2012 International Congress of Entomology has been assembled by John Trumble, with assistance from Tim Paine and Murray Isman.

Members are encouraged to visit the ESA website (www.entsoc.org) for more information about Governing Board activities, votes, etc. Use your ESA Username and Password to access the minutes of all meetings (click on Governing Board and then go to Meeting Minutes).

Final Comments

It has been my pleasure to represent the Pacific Branch on the Governing Board of the Entomological Society of America, December 2004 to December 2007. I regret my absence at the 2007 Portland meeting, due to attendance and symposium participation at a 24-28 meeting in New Zealand. I very much look forward to seeing my Pacific Branch colleagues and friends at the December national meeting in San Diego and the 2008 PB meeting in Napa, California. Please contact me (slclement@wsu.edu) if you have questions or require more information.

6:20 **Secretary-Treasurer's Report:** Brian Bret

1. Recognition of Deceased Members – the following entomologists will be recognized during the General Session Monday morning:

| | | | |
|---|-----------------------|---|------------------------|
| t | Mr. Robert P. Allen | t | Dr. Harvey I. Scudder |
| t | Mr. David Allison | t | Dr. Vernon M. Stern |
| t | Mr. Charles R. Ash | t | Dr. Donald M. Tuttle |
| t | Dr. Richard M. Bohart | t | Dr. Theo F. Watson |
| t | Mr. Frank T. Hovore | t | Dr. Michael A. Wells |
| t | Mr. Rodney S. Mendes | t | Mr. Glenn M. Yoshimura |

2. Recognition of Sponsors and Exhibitors – 16 companies have provided \$6,500 in financial support for this year's meeting. Sponsors are recognized in the printed program and will be recognized during the General Session Monday morning and during the Awards Luncheon on Tuesday. Please extend your gratitude to the following companies:

Gold Level Sponsors

BASF Corporation
Syngenta

Silver Level Sponsors

Bayer CropScience
Dow AgroSciences
DuPont Crop Protection
Suterra LLC

Bronze Level Sponsors

Arysta LifeScience
Cerexagri, Inc.
Chemtura
Exosect Ltd.
Gowan Company
Makhteshim-Agan
Nichino America, Inc.
Orkin PCO Services
Pacific BioControl Corporation
Valent USA/Valent BioSciences

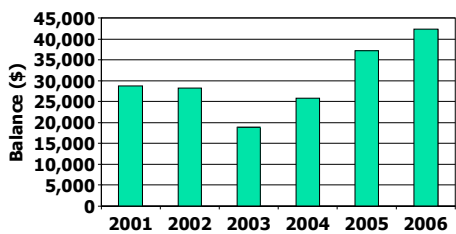
3. Financial Update

Current balance as of 12/2006 for ESA Pacific Branch is \$42,309.36. This is a net increase of \$5,206.84 over 2005. This was based on strong support from sponsors of \$4750, Program Enhancement Funds from ESA central office of \$2,942, and high registration at the meeting in Maui (\$19,660 registration fees).

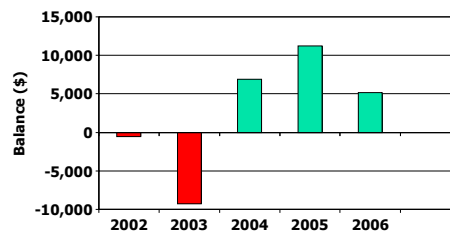
| Accounts | Beg. Balance 12/31/2005 | End Balance 12/31/2006 |
|---|------------------------------------|-----------------------------------|
| Wells Fargo Business Market Rate | 30,788.72 | 31,033.59 |
| Wells Fargo Basic Business Checking | 6,313.80 | 11,275.77 |
| Total | \$37,102.52 | \$42,309.36 |

An overview of the past 6-7 years is provided. Pacific Branch balance sheet has increased since 2001 with a slight dip in 2003.

ESA Pacific Branch –
Year End Balance 2001-2006

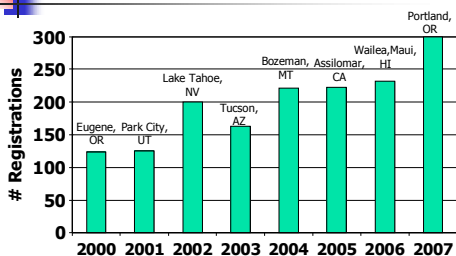


ESA Pacific Branch –
Annual Net Income/Loss 2002-2006



Attendance at meetings has grown since 2000. This year's meeting with over 300 attendees has exceeded all previous meetings in recent history.

ESA Pacific Branch –
Meeting Attendance 2000-2007



4. Program Enhancement Funds

Program Enhancement Funds are provided by ESA central office to encourage development of a strong program at the branch meetings. This years PEFD was \$3,461. This was due to the high numbers of registrations at the 2006 meeting in Maui and the steady increase in Pacific Branch membership.

6:35 New Business

1. 3-Year Advance Coordinated Selection of President-Elect, Future Meeting Site, and Concurrent Executive Committee Meeting.
2. Update of By-laws (Lucia Varela, Brian Bret). Current by-laws are very outdated. Lisa Neven had someone type the PBESA constitution and by-laws into an electronic copy. Copies were distributed to prior committee chairs, but only Lucia and Brian have updated their sections. Larry Godfrey to convene an ad hoc by-laws committee this summer to review and update. Suggestion made to change many of the by-laws to policies and guidelines. That will allow greater flexibility for Executive Committee to change guidelines to meet existing needs. Example are travel reimbursement policies that should be developed at the discretion of the Executive Committee commensurate with financial status of the branch, without having to go the full membership for a vote.
3. Pacific Branch Archive (Hanna Burrack for Frank Zalom): Branch has not had an archivist for many years. Several boxes of material are at the library in UC Davis, plus another 2 boxes of material from former Secretary/Treasurer Kurt Volker. Outgoing Secretary/Treasurer Brian Bret will have some additional items to contribute. Suggestion to solicit a volunteer, perhaps from an emeritus member. (See attachment below.)

4. Selection Criteria for Woodworth Award (Vicki Yokoyama)
 - a. Eligibility and selection criteria need to be better defined. According to by-laws, does not require membership in Pacific Branch for eligibility. In addition, selection criteria does not currently take in to consideration involvement or activity in Pacific Branch.
 - b. Update of by-laws is needed to reflect current practice for eligibility for CW Woodworth Award. Recent changes by ESA central office will no longer restrict branch membership to geographic location. Someone in western US could chose to belong to another Branch, or someone working in another branch could choose to belong to Pacific. This topic was tabled until there is a better understanding of the impact this change might have on Pacific Branch membership and involvement.
 - c. Carolyn Pickle moved that the executive committee approved a procedure for 2008 meeting as presented by Vicki Yokoyama regarding criteria for C.W. Woodworth Award, that an additional selection criterion for Woodworth nominees include participation in the Pacific Branch. Doug Walsh seconded, motion passed unanimously.
5. 2012 International Congress of Entomology – San Diego. Group of Pacific Branch members lead by John Trumble is proposing San Diego as the site of the 2012 International Congress of Entomology. Pacific Branch and headquarters are supportive of this effort.
6. Comstock Graduate Student Award: Suggestion was made that registration should be complimentary. It was felt that the student fees are nominal, and that students should be attending the meeting anyway. In addition, the winner get's a trip to National meeting paid for by headquarters. No further action was taken.
7. Software is needed for creating meeting program. North Central Branch uses a program. Need help from ESA headquarters. Larry Godfrey will look into this with headquarters.

6:55 **Adjourn**

ESA Presidential Committee on ESA Archives
Frank G. Zalom, Pacific Branch Representative
(submitted via email)

ESA President Frank Gilstrap appointed a special presidential committee to discuss the status and fate of the ESA National and Branch Archives, and its first conference call was May 11, 2006. I was asked to represent the Pacific Branch because I was probably the last person to ever see the Pacific Branch Archives as they exist.

Pacific Branch Archives - an overview:

For background, my memory of the archives goes back to Duncan Carter and then Steve Dorman who basically served as Branch Archivists for many years. I became aware of the archives when I was Pacific Branch Secretary-Treasurer, and learned that they were kept in Dr. Dorman's garage. He would collect materials from the Branch meetings, and keep them. The materials that are most complete annually go back into the early 1950s, but there are older documents as well including things like photos. When Dr. Dorman could no longer maintain the archives himself, the Branch asked me, as Secretary-Treasurer, to see if the UC Davis library would be willing to house the Archives in their special collections. I made these arrangements and the Archives, such as they are, were committed to the library's Special Collections.

The UC Davis Library website has a URL that describes the Pacific Branch Archives in general terms as follows:

Manuscript Collections

Entomological Society of America, Pacific Branch Archives

Collection Number: D-217.

Extent

10 linear feet.

Biography

The Pacific Branch of the Entomological Society of America was officially formed in December, 1915, to study relationships of people to pests and beneficial insects. The organization contributes taxonomic resources to universities and museums, and provides a forum for debate on insect issues, and is represented by British Columbia, California, Oregon, Washington, Arizona, Utah, Hawaii, Montana, and Nevada.

Description

Annual meeting and committee minutes, annual reports, correspondence, financial documents, programs, and informational brochures.

Inclusive Dates

1939-1986.

Access

Researchers should confirm collections are available, before visiting, as many collections are stored offsite.

For those who are interested, the URL for the Archives is:

<http://www.lib.ucdavis.edu/dept/specol/manuscripts/index.php?collection=96>

As I recall, materials included programs from every year starting in the early 1950s (maybe earlier), minutes of the executive committee meetings and the annual meeting from most if not all years, some photos, lists of Branch officers, Branch meeting sites, dates, and attendance, a list of Woodworth Awardees, and a lot of miscellaneous photos and additional documents.

The Pacific Branch has not had a regular Archivist since then, so little has been added although I think that I did add a few things after the 1986 date, but not recently (last decade or more).

ESA Presidential Committee on ESA Archives:

The committee began to address these issues:

1. Key issues
 - a. Current status of all archives – Branch and ESA Central
 - i. Where are these located?
 - ii. What is their general condition, and how much is being saved?
 - iii. What are current plans for keeping these materials?
 - b. How can ESA best assure continuity in processing materials to be archived?
 - c. What are the concerns about the mode for archiving – PDF on CD, on DVD, other?
 - d. Once archived, what is the best mechanism for listing archived materials?
 - e. How should archived materials be made available to members or others?
2. Guidelines on how to decide what should be archived.
 - a. Necessary for deciding what to keep from materials already saved.
 - b. Necessary for deciding what should be kept in future.
 - c. Are there obvious materials that should be kept or obtained – e.g., photos, Annual Meeting program books or schedules, other?
3. Will ESA have to provide funding to facilitate making any progress on archiving either ESA Central or Branch materials?
 - a. How much money might be needed?
 - b. Could this be accomplished by one or more graduate students? If so, what is best mechanism for getting funds to the student(s)?
 - c. How should the process be administered and the results reported?

Current Status:

The ESA Central Archives at Iowa State University will be inventoried and suggestions made on what to add to the Central Archives in the future as well as a possible electronic version of materials. The Governing Board has approved \$6000 for Central and Branch Archives, which includes \$1000 for each Branch to take 'next steps'. The 'next steps'

should include developing an inventory of what exists in the Branch Archives, agreement on priority items to include in the Archives (suggestions include programs, minutes, photos, but not to exclude additional items of interest), updating the Archives with additional materials, and determining feasibility of digitally preserving the documents. The \$1000 can be used by the Branch in any way - to hire students to assist in this process, to pay for scanning or otherwise digitizing the documents, or even to pay an honorarium to a member who takes this on. President Scott Hutchins will reappoint this committee during his term.

Recommendations for President Riedl and the Executive Committee:

I recommend that the Branch appoint an Archivist who will replace me on the Presidential Committee on ESA Archives. Among charges for this person are:

1. Inventory the Pacific Branch Archives at UC Davis and develop a spreadsheet of what is available.
2. Work with the Executive Committee to decide what priority items should be included in the Archives (existing materials probably can not be removed)
3. Contact Past Presidents, Secretary-Treasurers, and others as designated by the Executive Committee to identify and add priority materials to the Archives to make them current and update the spreadsheet of available materials.
4. Explore a mechanism to digitally preserve the new materials and possibly the existing materials.
5. Develop the mechanism by which materials are gathered annually for updating the Archives.

There will be considerable work necessary up front to do this, but once the Pacific Branch Archives are inventoried and updated, they will provide an excellent historic record of entomology in the western US. I would suggest that an Emeritus member from the Branch be appointed to become Archivist, or that an Active Member with a special interest in Pacific Branch history and time to commit to this effort be appointed.

Respectfully submitted,
March 25, 2007
Portland, Oregon

**ESA Pacific Branch
Awards Luncheon
Tuesday March 27, 2007**

Congratulations to the following award recipients:

CW Woodstock Award – Nick Toscano, UC Riverside

John Henry Comstock Student Award – Rajagopalbabu (Babu) Srinivasan, Univ. Idaho

ESA Distinguished Achievement Award in Extension Award – Kent Daane, UC Berkeley

ESA Distinguished Achievement Award in Horticultural Entomology – Peter Follett – USDA-ARS, Hawaii

ESA Distinguished Achievement in Teaching – Sujaya Rao, Oregon State University

ESA Recognition Award in Entomology – Mark Hoddle, UC Riverside

ESA Recognition Award in Insect Physiology, Biochemistry and Toxicology – Nelson Thompson, UC Riverside

Award for Excellence in Integrated Pest Management – Diane Alston, Utah State University

Integrated Pest Management Team Award – Pacific Northwest Vineyard Team, Doug Walsh,

Holly Ferguson, Tim Waters, Ron Wight, Len Welch, Washington State University

Special Recognition for service as Pacific Branch Secretary/Treasurer 2002-2007 – Brian Bret, Dow AgroSciences

Photo Saloon – Best of Show - \$50 and award certificate – David James, Washington State Univ.

2007 PBESA Student Competition Award Winners

Undergraduate Participants – Certificates of Appreciate

Emily C. Poor, Univ. Idaho

Bennett Kirsch, Univ. Idaho

Mike Reitmajer, Oregon State Univ

Robert W. Davey, Whitman College, WA

Melia Nafus, Univ Idaho

Award certificates and \$150 to first place winners/\$100 to second place winners as follows:

MS Poster

1st place – Robert L. brown, Washington State Univ.

2nd place – Martin E. Adams, Portland State Univ

MS Paper Presentation

1st place – Christina A. Romero, UC Riverside

2nd place – Glenn R. Kohler, Oregon State Univ.

PhD Poster

1st place – Kevin A. Williams, Utah State Univ

2nd place – J.U.D. Lozier, UC Berkeley

PhD Paper Presentation

1st place Session 1 – Hannah J. Burrack, UC Davis

1st place Session 2 – Ricardo A. Ramirez II, Washington State Univ

2nd place Session 1 – Ryan P. Hanavan, Univ. Idaho

2nd place Session 2 – Mariangie Ramos, Univ. Idaho.

**ESA Pacific Branch
Final Business Meeting
Wednesday March 28, 2007**

I. Sujaya Rao – Program Chair

Excluding cancellations, there were a total of 168 papers and 65 posters. On-site registrations were very high this year. Some of the posters and symposia speakers never registered.

II. Robin Rosetta – Registration Chair

Preliminary count – over 323 total attendees, 14 had registration fees waived. 319 paid attendees includes 64 students, 5 emeritus members, and 47 non-members. Many asked for 1 day registration. Suggestion to keep registration fees simple, have folks pay full fee. Fees are not out of line for similar meetings, less than many. Comment from ESA President Scott Hutchins that Pacific Branch attendance may have exceeded that of Central Branch this year.

III. Meeting Debriefing

Comments on the meeting and suggestions for improvement:

- t Excellent meeting. Great turn out and great program.
- t Photo Saloon (*sic*) with cash bar on Tuesday evening was one of the more successful Photo Salons. Keep the saloon for future salons.
- t Need to make sure people preload their presentations prior to beginning of their session. Several available versions of Microsoft PowerPoint resulted in some incompatibility issues with the computers. Suggest symposia organizers be responsible for loading their speakers' talks on their own computers.
- t Suggestion to include the name of their university when announcing student winners during the awards luncheon.

IV. Elections

The following nominations for ESA Pacific Branch officers were approved by voice vote:

- t Walter Bentley, UC Kearney Agricultural Center - President-elect (2008/09)
- t Mike Lees, Dow AgroSciences - Secretary/Treasurer (2007-10)
- t Mike Ivie, Montana State Univ - Executive Committee (2007/2008 - replacement for Sue Blodgett who has left the Pacific Branch for Department Head position at Univ. of South Dakota)
- t Brian Bret, Dow AgroSciences, and Alberto Pantoja, USDA-ARS Fairbanks - Executive Committee (2007-2010 - replacements for Lucia Varela and John Palumbo whose terms expired)

In addition, the following Pacific Branch candidates for national office of President, Treasurer, and Governing Board representative were approved by voice vote:

- t John Stark, Washington State Univ, for Pacific Branch candidate for President-Elect of ESA.
- t Mike Parrella, UC Davis, for the Pacific Branch representative to Governing Board.
- t Brian Bret, Dow AgroSciences, for Pacific Branch candidate for Treasurer of ESA.

V. Next meeting – March 30-April 3, 2008 at Embassy Suites, Napa, CA.

Incoming President Larry Godfrey gave a brief slide show of the Embassy Suites and Napa Valley in anticipation of next years meeting.

VI. Resolutions – Jim Barbour

See attached. Proposed resolutions were passed by voice vote.

VII. Close

Larry Godfrey assumed position of President for Pacific Branch for 2007-2008. Meeting adjourned at 8:00 a.m.

RESOLUTIONS:
91st Annual Meeting Pacific Branch of the Entomological Society of America
Portland, Oregon
March 25-28, 2007

- 1. Whereas:** The President of the Pacific Branch of the Entomological Society of America, Helmut Riedl, dutifully and commendably participated in and facilitated the 91st Annual Meeting of the Pacific Branch;

Be it resolved: that the Pacific Branch convey its appreciation to President Riedl for the informative reports and other helpful contributions he made at our Executive Committee meeting, business meeting and general program meeting.
- 2. Whereas:** the committees of the Pacific Branch admirably carried out their work by organizing an annual meeting that was intellectually stimulating, professionally productive and enjoyable;

Be it resolved: that the Pacific Branch express its thanks to each of the Chairs and all of the members of the 20 committees listed in the 91st annual meeting program, and further, that the Pacific Branch especially recognize Local Arrangements Committee Chair, Darrell Ross, the Program Committee Chair, Sujaya Rao, the Registration Committee Chair, Robin Rosetta, Awards Canvassing Committee Chair, Carolyn Pickel, the Operations Committee Chair, John Luna, and Secretary-Treasurer, Brian Bret, who tirelessly worked together and organized a most superior annual meeting.
- 3. Whereas:** Oregon State University at Corvallis hosted the Pacific Branch ESA website, which provided at no cost to our society a user-friendly site with readily downloadable program abstracts and other important details about our annual meeting and that Sally Duckwall managed the site in an exemplary manner;

Be it resolved: that the Pacific Branch express its gratitude to Oregon State University and Web Master Sally Duckwall for a job done with excellence.
- 4. Whereas:** the management and personnel of the Portland Marriot Downtown Waterfront conference grounds, especially Shirley Koch, enhanced our annual meeting through their superior facilities, gracious service and other assistance to our members;

Be it resolved: that the Secretary be instructed to write a letter of thanks to the management of the Portland Marriot Downtown Waterfront, Portland, Oregon.
- 5. Whereas:** the generous funding and other support provided by the Sustaining sponsors of the Pacific Branch of the Entomological Society of America contributed to the success of our 91st annual meeting;

Be it resolved: that the Pacific Branch express its thanks to each of our 2006-2007 Gold Sustaining Sponsors, BASF Corporation and Syngenta, our Silver Sustaining Sponsors, Bayer CropScience, Dow AgroSciences, DuPont Crop Protection and Suterra LLC, and to our 2006-2007 Bronze Sustaining Sponsors, Arysta LifeScience, Cerexagri, Chemtura, Exosect LTD, Gowan Company, Makhteshim-Agan, Nichino America, Orkin Pest Control Services, Pacific Biocontrol and Valent USA/ Valent BioSciences.
- 6. Whereas:** the generosity of companies and grower organizations contributed to the success of our 91st annual meeting by providing fruit and fruit products for the session breaks and door prizes for the Awards Luncheon;

Be it resolved: that the Pacific Branch express its thanks to each of the companies and grower organizations listed in the program as providing fruit or fruit products and door prizes for our 91st annual meeting.

7. Whereas: Brian Holden, the great grandson of C. W. Woodworth and his wife, Joann Wilfert have generously provided financial support for the C.W. Woodworth Award;

Be it resolved: that the Pacific Branch convey its appreciation to Brian Holden and Joann Wilfert for their generous gift.

8. Whereas: Brian Holden, Mary Dietrich and other members of the C. W. Woodworth family attended and participated in the 91st annual Pacific Branch meeting, and Mary Dietrich, niece of C. W. Woodworth, presented her memories of C. W. Woodworth at the opening session of our meeting;

Be it resolved: that the Pacific Branch convey its appreciation to Brian Holden, Mary Dietrich and other members of the C. W. Woodworth family for their attendance and participation at our 91st annual meeting.

9. Whereas: National ESA President, Scott Hutchins, and Chris Stelzig, National ESA Director of Membership, attended and participated in the 91st annual Pacific Branch meeting;

Be it resolved: that the Pacific Branch convey its appreciation to Scott Hutchins and Chris Stelzig for their participation at the 91st Annual Pacific Branch meeting.

10. Whereas: the Pacific Branch of the Entomological Society of America has lost several of its steadfast members through death since our last annual meeting in 2006;

Be it resolved: that the Secretary be instructed to communicate the heartfelt condolences of the Pacific Branch to the families of our deceased members.

Respectfully submitted,

Jim Barbour

3/28/2007