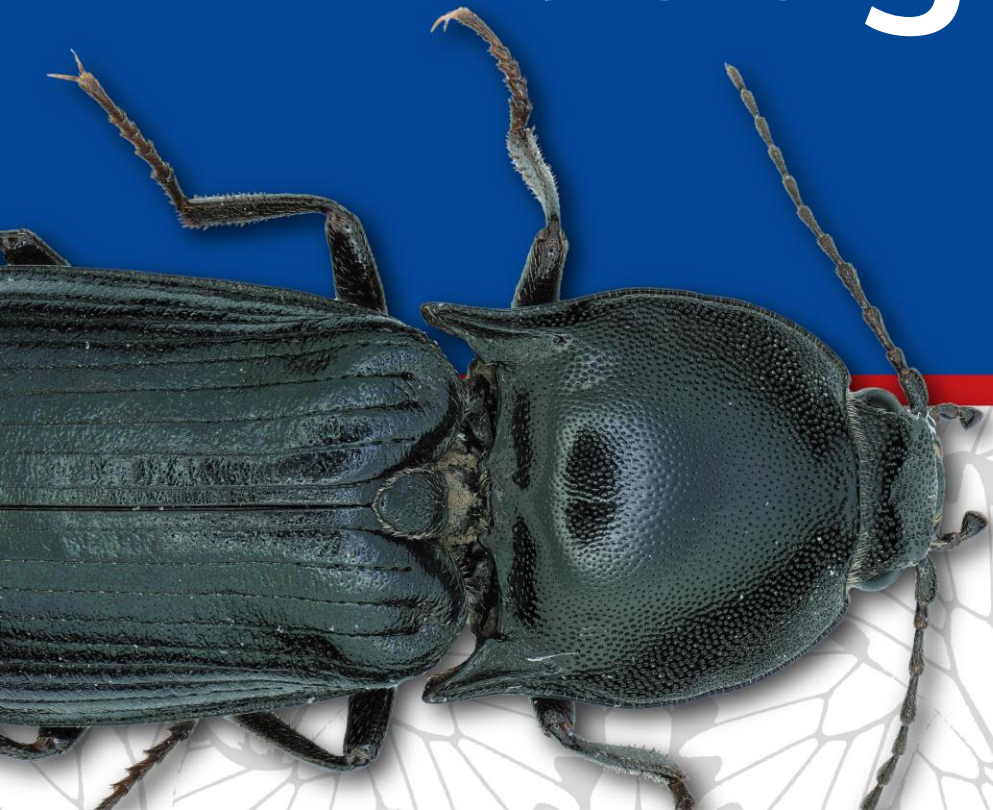


Student Competition Judges Training



2023
ENTOMOLOGY
November 5-8 | National Harbor, MD



Student Competition Co-Chairs



Dr. Floyd Shockley
Smithsonian Institution



Dr. Karen Poh
USDA-ARS

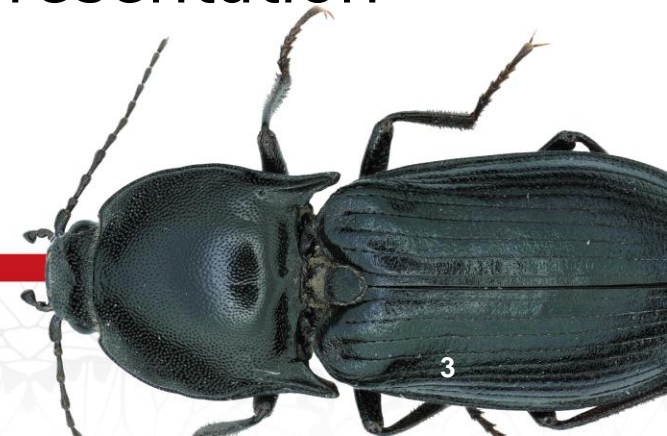


Today's Presentation

We will review everything you need to know to be a student competition judge

Please stay for the entire presentation

Some topics may not apply to all competition types, but general judging information will be conveyed throughout the presentation



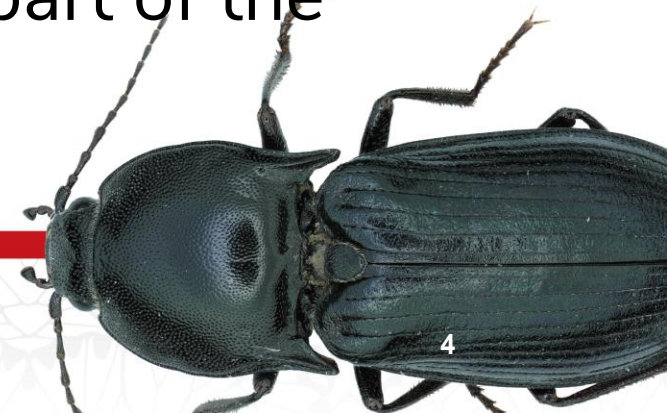
Competition Snapshot

This year in the student competition there are:

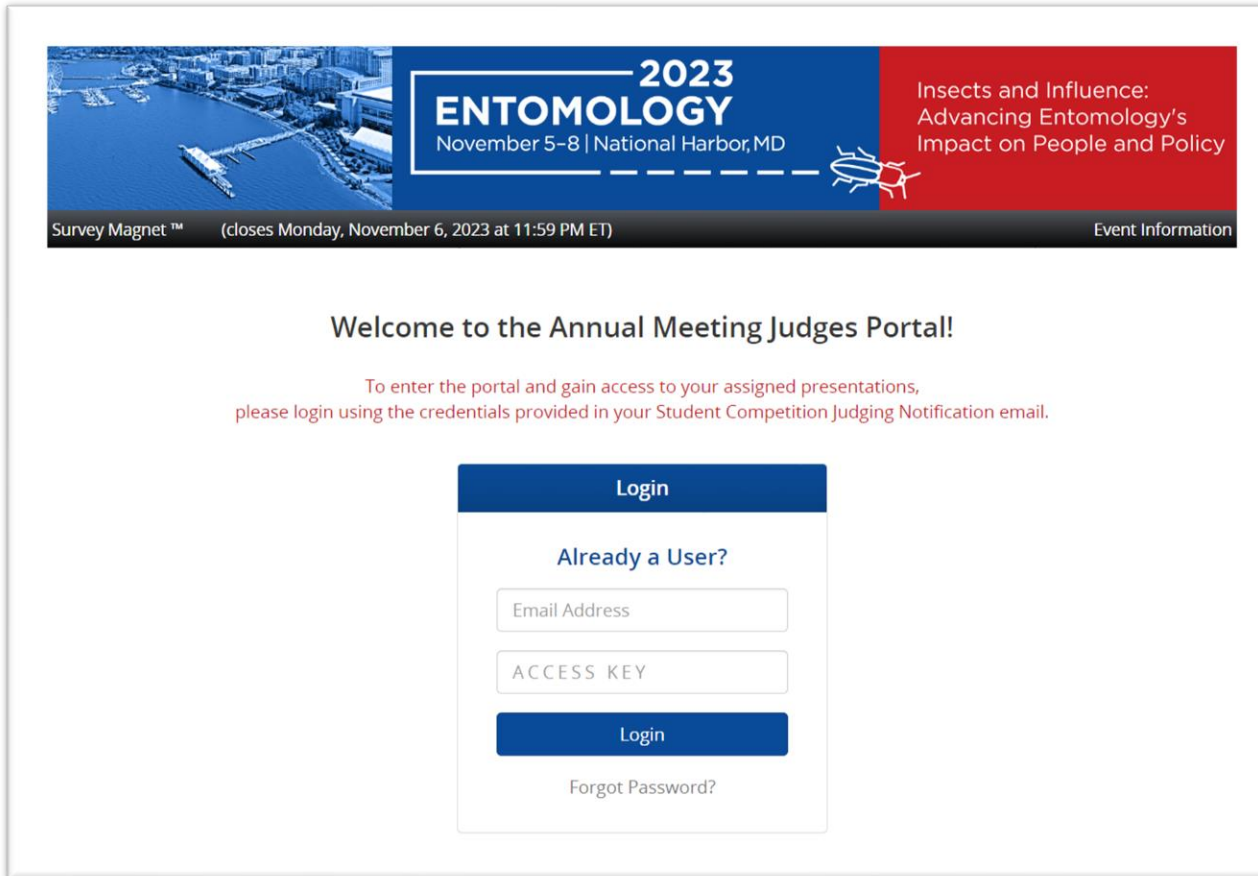
611	10-min talks
215	Posters/Infographics
94	Total Sessions
435	Judges & Moderators

We could not do this without you!

Thank you for your time and service to this important part of the Annual Meeting!



Judging Portal



The screenshot shows the top banner of the portal with a cityscape image, the event title '2023 ENTOMOLOGY', dates 'November 5-8 | National Harbor, MD', and the theme 'Insects and Influence: Advancing Entomology's Impact on People and Policy'. Below the banner, a welcome message is followed by login instructions. A login form contains fields for 'Email Address' and 'ACCESS KEY', a 'Login' button, and a 'Forgot Password?' link.

2023
ENTOMOLOGY
November 5-8 | National Harbor, MD

Insects and Influence:
Advancing Entomology's
Impact on People and Policy

Survey Magnet™ (closes Monday, November 6, 2023 at 11:59 PM ET) Event Information

Welcome to the Annual Meeting Judges Portal!

To enter the portal and gain access to your assigned presentations,
please login using the credentials provided in your Student Competition Judging Notification email.

Login

Already a User?

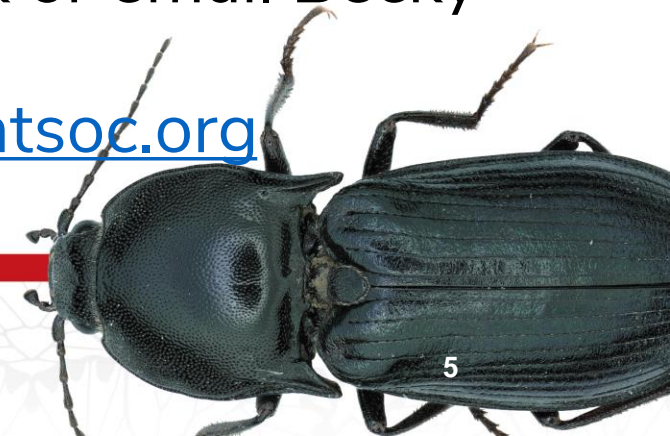
Email Address

ACCESS KEY

Login

Forgot Password?

- Judging notification will include your login information
- DO NOT select “Join Now” if it appears
- If you forgot (or cannot find) your access key, select Forgot Password link or email Becky Anthony at banthony@entsoc.org



Judging Portal

Once logged in, you will see the following screen. Select “Evaluate Presentations” to get started.



INSTRUCTIONS

Please select "Evaluate Presentations" to view your assigned presentations.

All scores and feedback for the student competition must be submitted by Monday, November 6 at 11:59 PM Eastern Time.



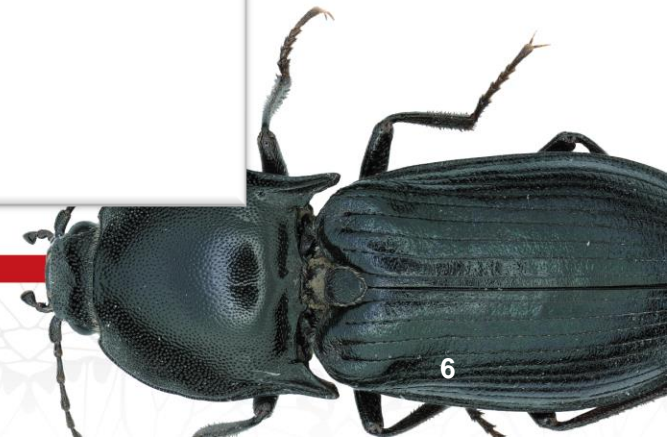
TASKS (You have 1 left to complete out of a total 1 assigned tasks)



Evaluate Presentations



Student Competition Judges Information



Evaluate Presentations

Select the "Start Evaluation" button next to the presentation due to enter scores and feedback. If you have a conflict of interest or if the presentation is a "no show", please leave the evaluation incomplete. When you have completed all of your evaluations, click "Submit" in the top right corner to finalize your scores.

Sort Alphabetically

Filter sessions...

C (2)

9:00 AM – 6:30 PM

Calliphoridae larval mass development
during carrion decomposition

Start Evaluation

9:00 AM – 6:30 PM

COI DNA barcoding of forensically relevant
insects collected during decomposition in
Huntsville, Texas, USA

Start Evaluation

E (1)

F (1)

I (2)

- All assigned presentations will be listed alphabetically
- Use “Sort” dropdown for different view, if preferred
- “Start Evaluation” to enter scores



Online Judging Form

Presentation type

Presentation title
and speaker name

Criteria are scored on a
scale of 1-5, 1-10,
or 1-15

Poster Evaluation

Monday, November 6th
9:00 AM – 6:30 PM

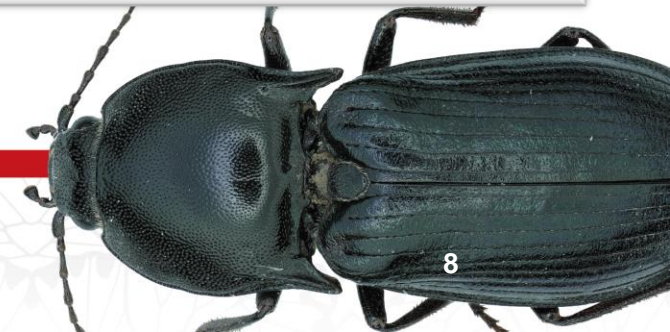
(D3008) Calliphoridae larval mass development during carrion decomposition

Presenting Author: Anthony Grigsby – Michigan State University
Co-Author: Mark Benbow – Michigan State University
Co-Author: Kelly Waters – Michigan State University
Co-Author: Bethany Mikles – Michigan State University
Co-Author: Jennifer Pechal – Michigan State University

Content: Title concise, informative and relevant to poster content; judge title given on poster, not what is listed in the online program (Required)

☐ 1
☐ 2
☐ 3
☐ 4

Submit



Online Judging Form

After scoring is completed, please take a few moments to add constructive comments to the student.

Be sure to click “Submit” to save all scores, comments, and changes.

NOTE: You may still alter scores and/or comments after clicking “Submit”.

Comments: Select all that apply

Skip

☐ A display presentation is visible in nature. Provide a better balance of text and photos, diagrams, figures, and/or tables.

☐ Information flow between sections was awkward or not clear.

☐ Display presentations can be improved by careful selection of color choice, color contrasts, font size, etc.

☐ More visible statements of objective, results, conclusions, implications will improve the display impact.

☐ Great use of photos and diagrams to illustrate your poster.

☐ Poster text was large enough and easy to read.

☐ Nice use of figures and tables to present data.

☐ Good choice of colors and fonts.

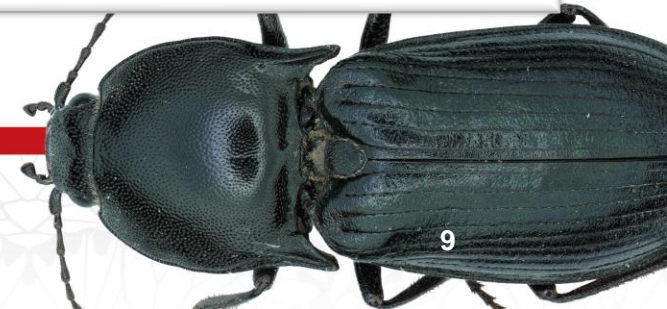
☐ Clear and concise objectives and conclusion.

☐ Good description of method.

Comments

Skip

Submit



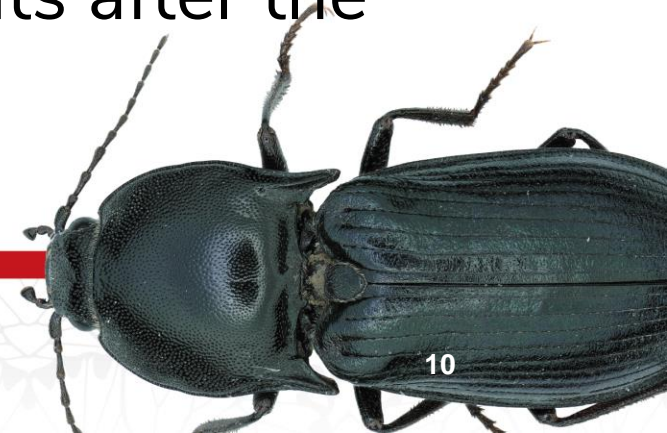
Adding Comments for Competitors

Provide constructive and helpful comments and remarks

- Some “common” comments have been pre-populated
- Or you can write specific comments in the “Comments” box

Avoid judging based on accent or appearance

All comments and feedback will be provided to students after the meeting



“No Show”

If a presentation is a “no-show”, skip it and score the next presentation

Do not enter any scores or comments for “no-show” presentations

You can use the “Home” link at the top of the screen to exit back out of an evaluation without saving



Conflict of Interest

Please recuse yourself from any talk, poster, or infographic with which you have a conflict; skip it and score the next presentation

Conflicts could include being:

- the student's advisor
- a member of the student's advisory committee
- a co-author on a student paper related to the work



In-Person Sessions

If you prefer to score on paper judging forms, they will be available in the Judges Break Room (Camellia 3-4) on Monday morning.

Only one form is needed per judge as there is room to score all presentations on one sheet of paper.

Ultimately you will submit all scores online.



In-Person Sessions

All scores and comments must be submitted online through your Judging Portal link:

- **Links will be provided by Becky Anthony via email**
- The Portal is adapted for your computer, phone or tablet
- Scores must be entered **by 10:00 PM Eastern US on Monday, November 6.**

Alternate judges: You will not receive a link unless you are called upon to judge



On-Demand Sessions

All scores and comments must be submitted online through your Judging Portal link:

- **Links will be provided by Becky Anthony via email**
- The Portal is adapted for your computer, phone or tablet
- The Portal will be open October 30-November 6
- Scores must be entered **by 10:00 PM Eastern US on Monday, November 6.**



In-Person 10-Min Paper Judges

Check in with the session moderator **at least 5 minutes before** the start of the session – this will help us determine any no-show judges

Make sure you are comfortable (e.g., water, coffee, use restroom) before session starts

Keep up with scoring each presentation – it will be difficult to come back later!



In-Person Poster & Infographic Judges

Check-in with the Student Competition Co-Chairs via text or email, though text is preferred

Karen Poh – (972) 998-4098; karen.poh@usda.gov

Floyd Shockley – (703) 789-4924; shockleyf@si.edu

Be sure to include your name & session you are judging

This will help us determine any no-show judges



In-Person Poster & Infographic Judges

Poster setup times for presenters have changed to 8-9 AM the morning of the competition (rather than Sunday night)

Judges may no longer enter the Exhibit Hall early to begin judging

You may enter beginning at 9 AM when the Exhibit Hall opens (though you are welcome to judge later in the day, if desired)



On-Demand Judges

Online content will launch Monday, October 30

You will be able view/watch presentations and posters in the online program (<https://entomology2023.eventscribe.net/>)

Reminder: All scores will be due **by 10:00 PM Eastern US on Monday, November 6**



How to Watch/View Assigned On-Demand Presentations

Option #1: Look for the Student Competition icons that will be posted in the online program homepage



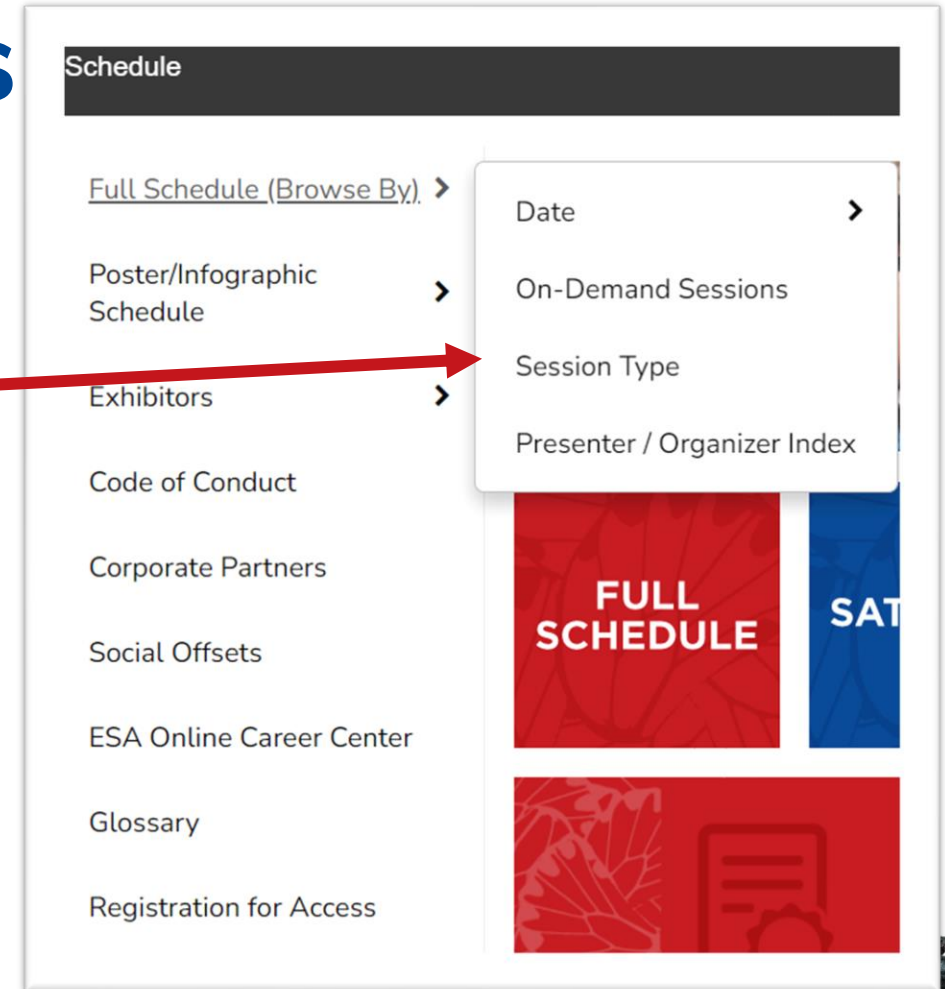
NOTE: You must be logged into the online program to view your assigned presentations



How to Watch/View Assigned On-Demand Presentations

Option #2:

For 10-minute Papers:
Use the Full Schedule navigation
and Browse by Session Type

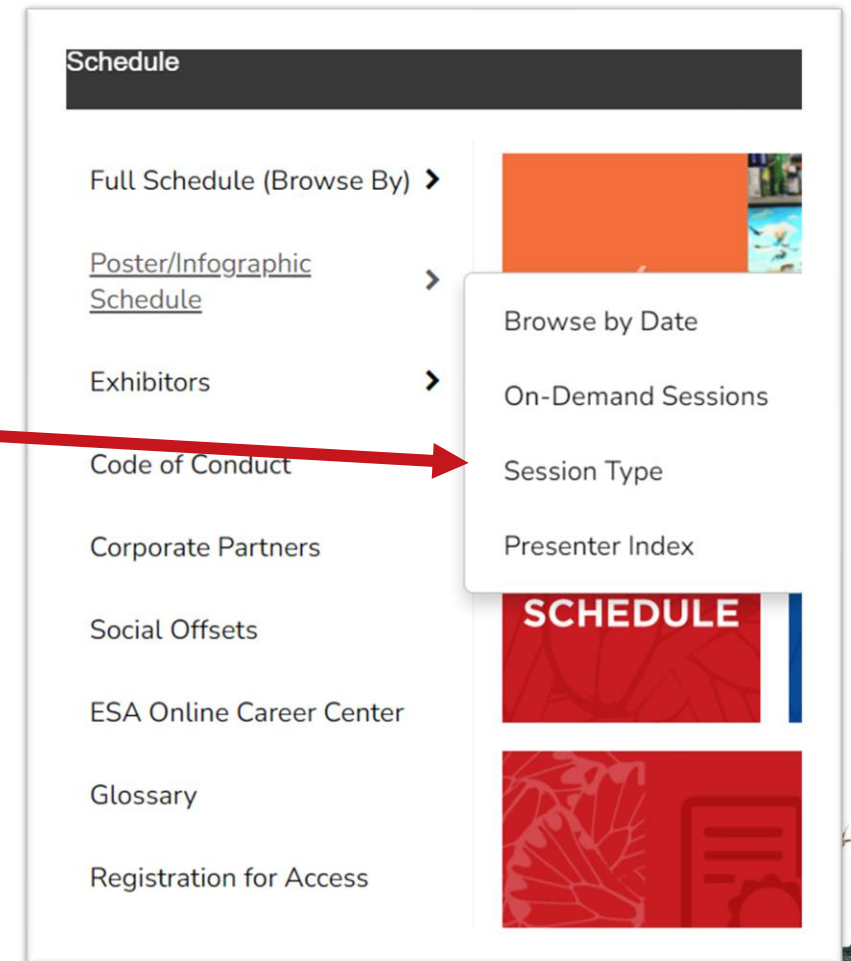


How to Watch/View Assigned On-Demand Presentations

Option #3:

For Poster/Infographic:

Use the Poster/Infographic Schedule navigation and Browse by Session Type



How to Watch/View Assigned On-Demand Presentations



Best Practice is to have two screens open: Online Program and Judging Form

★ Favorite Facebook Tweet

Student 10-Minute Paper On-Demand Medical, Urban, and Veterinary Entomology Physiology, Biochemistry, and Toxicology Plant-Insect Ecosystems Systematics, Evolution, and Biodiversity Student Competition Student

On-Demand Student Competition 10-Minute Papers

On-Demand

Presentations:

- ★ On-Demand
Genome sequencing, assembly, and annotation of *Cryptocercus punctulatus*, a subsocial wood roach and a sister to the termites
Presenting Author: Quanquan Liu – University of Kentucky
Co-Author: Xuguo Zhou – University of Kentucky
Co-Author: Zhan Shuai – Chinese Academy of Sciences

10-Minute Paper Evaluation

Submit

All Day

Genome sequencing, assembly, and annotation of *Cryptocercus punctulatus*, a subsocial wood roach and a sister to the termites

Presenting Author: Quanquan Liu – University of Kentucky

Content: Title concise, informative, and relevant for presentation content; judge title given at start of presentation (Required)

☐ 1

☐ 2

☐ 3

☐ 4

Note: You will not be able to view presentations in the Judging Portal. The Judging Portal is for entering scores and feedback only.



10-Min Presentation Rubric

Notes on scoring:

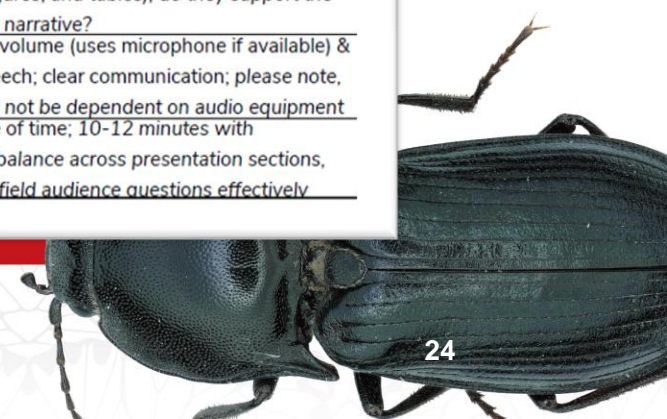
- Rubric updated to be inclusive of research, education, teaching, & extension presentations
- Same rubric for in-person and on-demand presentations
- Familiarize yourself with the rubric prior to judging

55% Content

45% Presentation

5	Title concise, informative, and relevant for presentation content; judge title given at start of presentation
10	Introduction and background with pertinent literature cited
10	Objectives or hypotheses clearly stated and concise / Objectives of course design or teaching program clearly stated and concise with learning gaps and target audience(s) identified
10	Materials and methods (study design) clear, concise, and appropriate to problem / Course or program design development and relevant evaluation metrics clear, concise, and appropriate for the learning gaps and audience(s)
10	Interpretation of results and analysis clear, concise, and accurate and addresses needs of target audience
10	Significance of results to field of study or teaching community and targeted audience clearly discussed
5	Logical order; minimum redundancy
5	Smooth transitions between presentation slides and sections, including speaker introducing themselves to the audience
5	Slides use universal design principles with appropriate fonts, font sizes, high contrast images (for example, avoiding color schemes that are hard to distinguish for colorblind participants like red/green)
5	Slides have no grammatical errors and are not excessively wordy
15	Effective use & description of visuals (i.e. photos, diagrams, figures, and tables); do they support the presentation narrative?
5	Appropriate volume (uses microphone if available) & speed of speech; clear communication; please note, score should not be dependent on audio equipment
5	Effective use of time; 10-12 minutes with appropriate balance across presentation sections, with time to field audience questions effectively

Rubric is available at: <https://www.entsoc.org/events/annual-meeting/student-competition-judges>



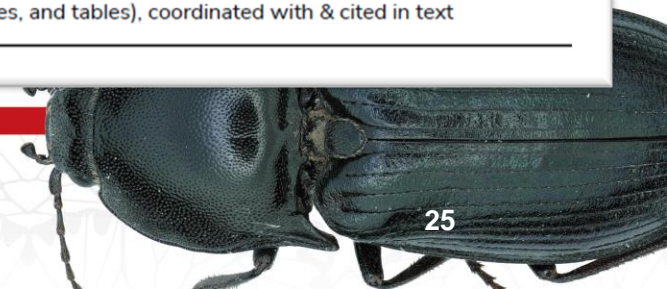
Poster Presentation Rubric

Notes on scoring:

- Rubric updated to be inclusive of research, education, teaching, & extension presentations
- In-Person: Students are not expected to be present during judging. Being available for questions/answers to questions is not part of their overall score.
- Similarly, audio recording is optional for on-demand posters, and not part of the judging rubric – DO NOT include the presence or absence of the optional recording as part of your judging

Rubric is available at: <https://www.entsoc.org/events/annual-meeting/student-competition-judges>

	A
5	Title concise, informative and relevant to poster content; judge title given on poster, not what is listed in the online program
5	Introduction, justification and background with pertinent literature cited
10	Objectives or hypotheses clearly stated and concise / Objectives of course design or teaching program clearly stated and concise with learning gaps and target audience(s) identified
10	Materials and methods (study design) clear, concise, and appropriate to problem / Course or program design development and relevant evaluation metrics clear, concise, and appropriate for the learning gaps and audience(s)
10	Interpretation of results and analysis clear, concise & accurate and addresses needs of the target audience; if poster is billboard style, the central billboard message ("hook") is supported by data provided
10	Significance of results to field of study or teaching community clearly discussed
5	Logical order, minimum redundancy
5	Effective use of space; smooth transitions between sections
15	Legible with appropriate-size fonts, color contrast, no conflicting backgrounds (high contrast images (for example, avoiding color schemes that are hard to distinguish for colorblind participants like red/green); if poster is billboard style, QR code functions properly and directs viewer to concise, relevant content
10	Text with no grammatical errors and not excessively wordy
15	Effective use and description of visuals (i.e. photos, diagrams, figures, and tables), coordinated with & cited in text



Infographic Rubric

Notes on scoring:

- Same criteria as previous years
- Intrigue and/or Surprise: Does it catch your attention and make you want to read it?
- Familiarize yourself with the rubric prior to judging

5	Title is short, original, intriguing, and appropriate for content; judges will score the title given on the infographic, not what is listed in the online program
10	Content is concise and easy to understand but accuracy is not compromised. It is understood that an infographic is different than a scientific poster; information presented is accessible to a wide audience
10	Content creates intrigue and/or surprise
10	Message is clear - Do you think the viewer would come away with a better understanding of the subject after viewing the infographic?
10	Significance of subject matter is clear. What new information does the infographic present and why is it important?
5	Relevant citations are included
10	Big picture, "take home" message is immediately evident
10	Effective use of space; Design elements (text and visuals) are appropriate for the format with good use of negative (empty) space - infographic feels neither too crowded nor too empty.
5	Legible with large fonts, color contrast, no conflicting backgrounds (for example, avoiding color schemes that are hard to distinguish for colorblind participants like red/green); both American and Canadian English spelling & grammar are acceptable (i.e., behavior/behaviour)
5	Overall infographic is pleasant to view and engages the audience
10	Use of graphical elements is creative, innovative, functional [QR code], and/or helps drive viewer understanding
10	Infographic is memorable and/or inspires viewer to learn more or take action

Rubric is available at: <https://www.entsoc.org/events/annual-meeting/student-competition-judges>



After Judging is Complete

Review all of your assignments and ensure scores and comments are entered

Once scores are completed, click the Submit button on the “Evaluate Presentations” homepage.

Enter all scores and comments **by Monday, November 6 at 10:00 PM Eastern**



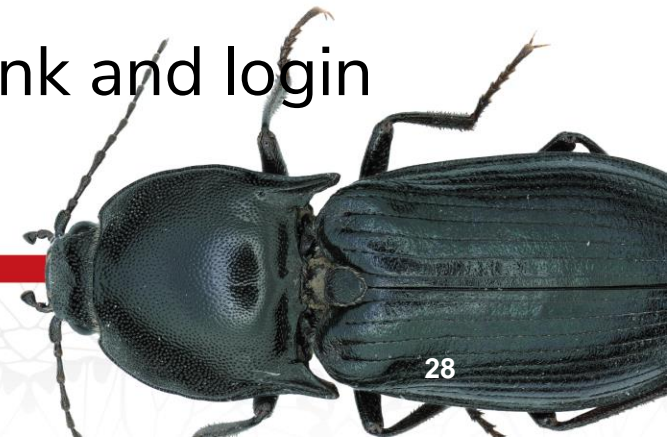
Alternate Judges

ASSUME YOU WILL BE NEEDED and be prepared to serve last-minute

Report to **Camellia 3-4** no later than **7:50 AM** and **10:20 AM** on Monday morning

Please stay in the room until the sessions begin in the event a late vacancy is identified

If you are needed to judge a session, you will be sent the link and login instructions for the Judging Portal



Judges Break Room

ESA is providing a space for all judges and alternates to utilize on Monday, November 6 in **Camellia 3-4** from **7:00 AM–2:00 PM**

- Paper judging forms will be available for pick-up starting at 7:00 AM
- Judges may use this space to enter their scores online using their personal devices
- Alternates are requested to gather in this room as sessions are being kicked off
- Continental breakfast and coffee will be available



Issues? Questions? Contact us!

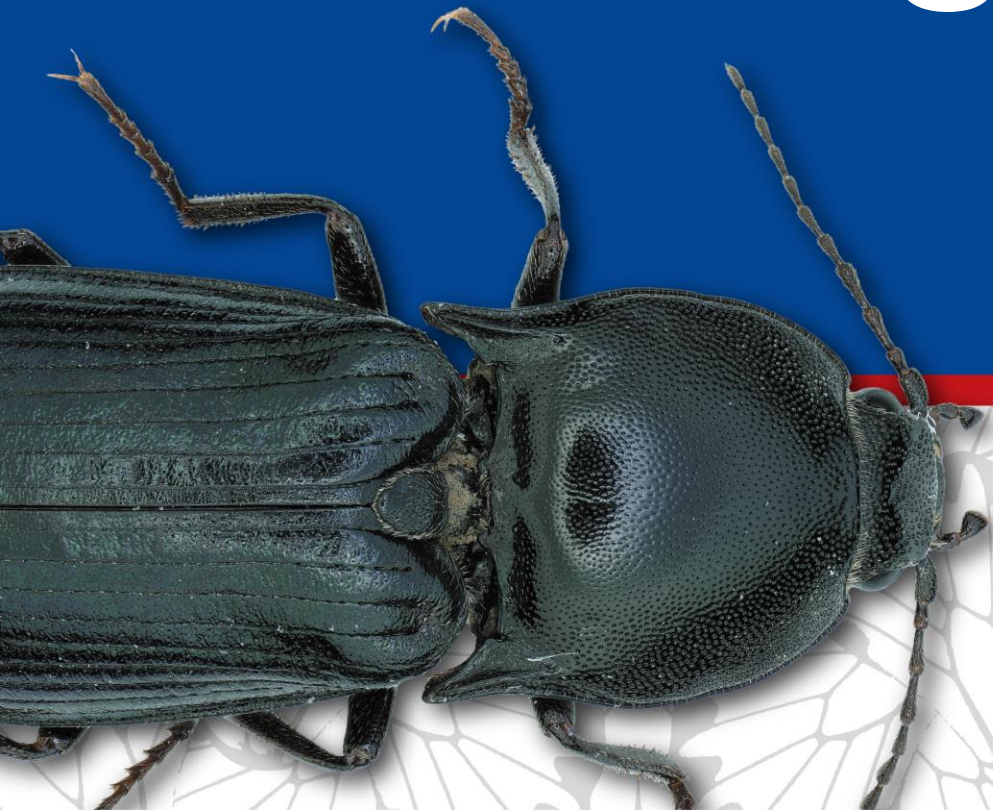
Karen Poh – (972) 998-4098; karen.poh@usda.gov

Floyd Shockley – (703) 789-4924; shockleyf@si.edu

Text is the preferred method of communication onsite



Thank you for your service!



2023
ENTOMOLOGY
November 5-8 | National Harbor, MD

