

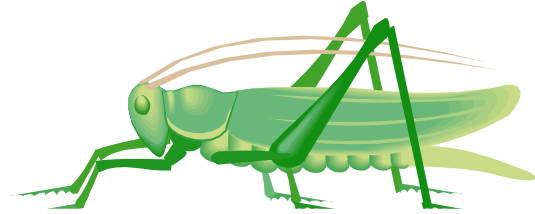
Dynamite Grasshopper Dissection

GENERAL STRUCTURE

- Three Body Regions: Head, Thorax, Abdomen
- Segmented Abdomen
- Exoskeleton
- Plates and Membrane of the Exoskeleton: Sclerites and Conjunctiva
- Paired, jointed appendages

HEAD

- **Frons**: upper front of face
- **Clypeus**: lower front of face
- **Vertex**: back of head
- **Gena**: cheek
- Simple Eyes: **ocelli**
- **Compound Eyes** made up of facets
- Antennae: **scape, pedicel, flagellum**
- Mouthparts
 - **Labrum**: upper lip
 - **Mandibles**: primary jaws / teeth
 - **Maxillae**: secondary jaws / teeth
 - **Hypopharynx**: tongue
 - **Labium**: lower lip
 - Palps: feelers and tasters
 - **Maxillary palps**
 - **Labial palps**



THORAX

- Three segments: **Prothorax, Mesothorax, Metathorax**
- Front Wings: leathery **tegmina**
- Hind Wings: membranous for flying
- **Tympanum**: membrane for hearing
- Legs
 - **Coxa**: hip joint
 - **Femur**: thigh
 - **Tibia**: shin
 - **Tarsus**: foot
 - Claws
 - Suction pad : **Arolium**

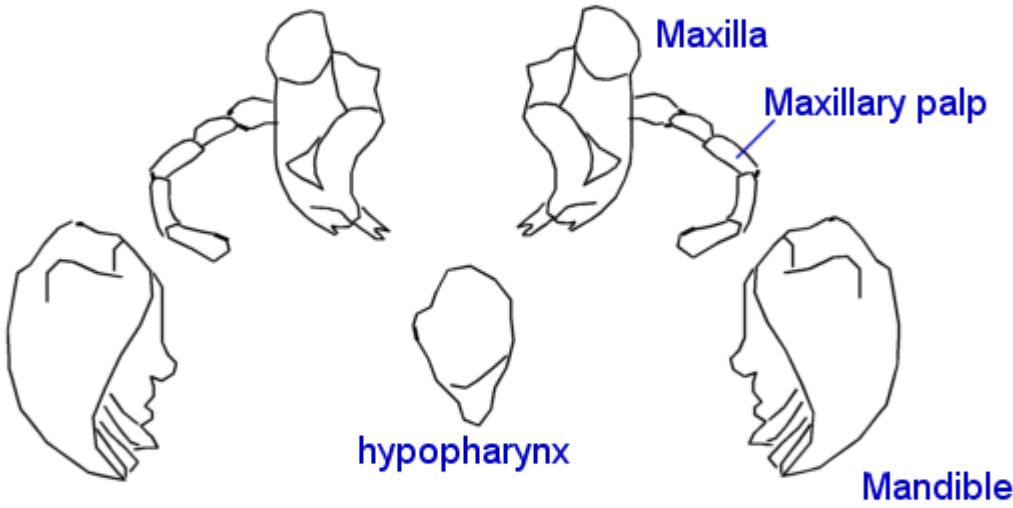
ABDOMEN

- Eleven Segments
 - Male reproductive parts: aedeagus
 - Female reproductive parts: **ovipositor**
- **Spiracles**: breathing holes





Labrum

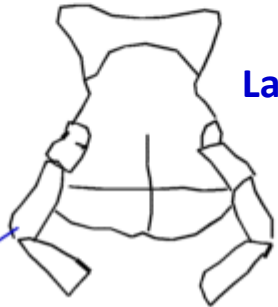


Maxilla

Maxillary palp

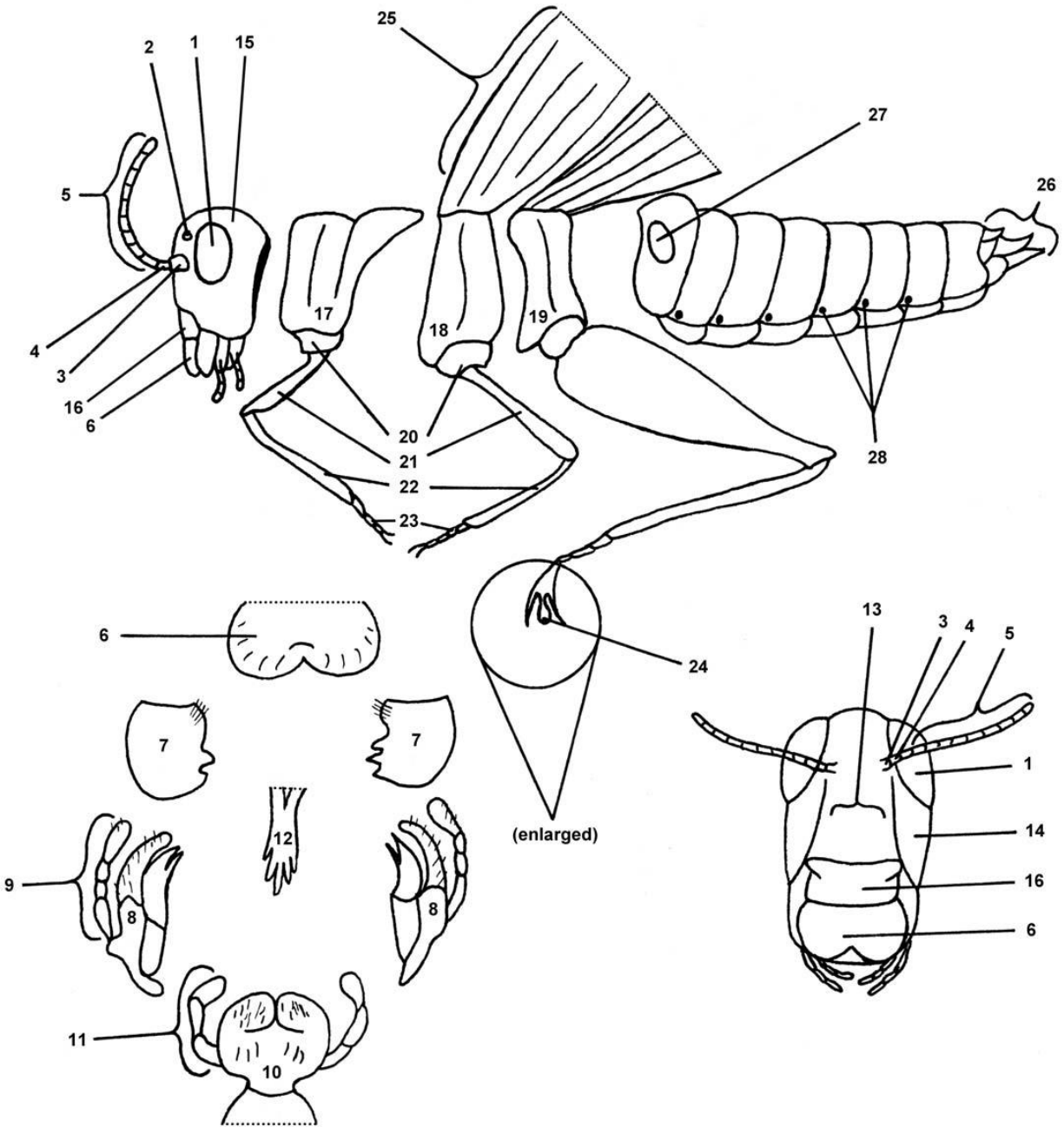
hypopharynx

Mandible

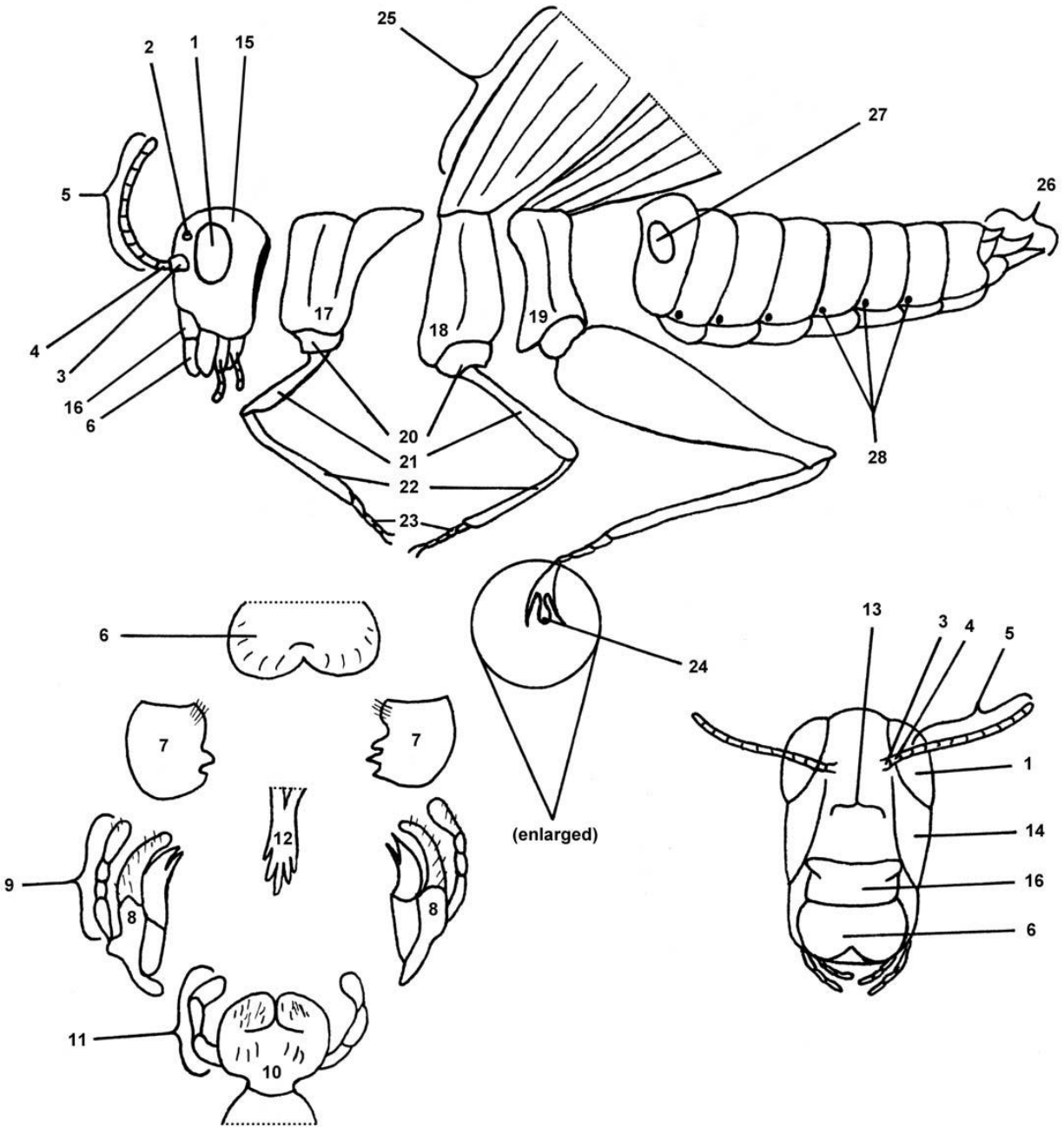


Labium

Labial palp



1	8	15	22
2	9	16	23
3	10	17	24
4	11	18	25
5	12	19	26
6	13	20	27
7	14	21	28



1 compound eye	8 maxilla	15 vertex	22 tibia
2 ocellus	9 maxillary palp	16 clypeus	23 tarsus
3 scape	10 labium	17 prothorax	24 arolium
4 pedicel	11 labial palp	18 mesothorax	25 tegmina
5 flagellum	12 hypopharynx	19 metathorax	26 ovipositor
6 labrum	13 frons	20 coxa	27 tympanum
7 mandible	14 gena	21 femur	28 spiracle